

# GCSE Photography

## Introductory Task

***SUMMER PREPARATION  
BOOKLET 2021***



# GCSE Photography

## Introductory Project

To prepare yourselves for the start of your **Photography GCSE** we would like you to complete the following **task** over your Summer Holidays.

You have chosen **Photography** and we hope that you will be as **passionate** about the subject as we are. This means that we expect you to show dedication by completing the following tasks to the **best of your ability** and then submit them on our **SharePoint** ready for your first lesson in September.

This project should take **A MINIMUM OF FOUR HOURS OF YOUR TIME**. Please email me if you have problems to [g.morris@penworthamgirls.lancs.sch.uk](mailto:g.morris@penworthamgirls.lancs.sch.uk).

When **PRESENTING** your work, you need to set up a PowerPoint slide to **A3 size**. You must not hand write – all annotation is to be **typed up using size 12 font only**. **Headings can be in size 16 font**. Please choose a **professional typeface** (or font) that is **legible** (readable).

### Task 1: CREATE an A3 Collage

Watch the video on **YouTube** and set up your PowerPoint to **A3 & Landscape**.

<https://www.youtube.com/watch?v=08NdisOiKzA>

Save your new PowerPoint as SummerProjectYourName. Fill the 1<sup>st</sup> slide of your PowerPoint with inspirational images from nature such as textures, patterns, lines, colours and shapes.

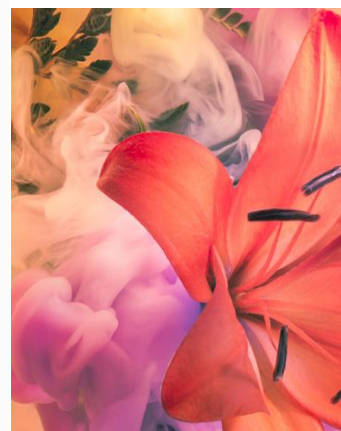
### Task 2: ARTIST RESEARCH

Look through the **natural form aqueous motion** photography of **Javiera Estrada**. Focus specifically on her **abstract nature** collection of [Nocturnal visions](#) or [Fleur De Sel](#).

Choose **12** of your favourite images from the [Nocturnal visions](#) or [Fleur De Sel](#) and collage them together using [www.photocollage.com/](http://www.photocollage.com/). Add this collage to your 2<sup>nd</sup> slide on your A3 PowerPoint sheet.



The Rainbow Connection



On the 3<sup>rd</sup> slide in your PowerPoint, choose **one image** from **Javiera Estrada's** [Nocturnal visions](#) or [Fleur De Sel](#) collection and paste it onto the PowerPoint.

Then using the **SEMI analysis worksheet** [here](#), **analyse** and type up the subject, elements, media and intent for your chosen image.

Please feel free to add in **cropped** parts of the picture, **enlarge** them and **draw over them** to help support your SEMI analysis.

### Task 3: PLAN

Read this article here on how to create **aqueous motion** [https://creativecloud.adobe.com/discover/article/shoot-a-surreal-flower-scene?scid=b42a2130-f10f-4726-8306-6a1e4f1ef01d&mv=social&mv2=owned\\_social&fbclid=IwAR13aetFtXOKWB3hthGIOz663qWkHQiQpC8Qvjrlaenodi3ABZy3LYeGR-U](https://creativecloud.adobe.com/discover/article/shoot-a-surreal-flower-scene?scid=b42a2130-f10f-4726-8306-6a1e4f1ef01d&mv=social&mv2=owned_social&fbclid=IwAR13aetFtXOKWB3hthGIOz663qWkHQiQpC8Qvjrlaenodi3ABZy3LYeGR-U)

Write a **'Shoot Plan'** that explains how you will try to **emulate** the work of **Javiera Estrada** at home, be creative & experiment with ideas 😊 Type up your 'Shoot Plan' on your 4<sup>th</sup> A3 PowerPoint and include images to support your ideas.

### Task 4: CREATE

Take your **shoot** of at least **35 photographs**. Download these onto your computer and create a contact sheet - <https://www.youtube.com/watch?v=BPIMQS4xgXc>

Print-screen this contact sheet and add them onto the 4<sup>th</sup> slide of your PowerPoint, alongside your shoot plan.

Select the **3 best images** from your shoot then edit using [www.pixlr.com](http://www.pixlr.com) or your own software. Add these images to slide 5 your A3 PowerPoint & save.

**TOP TIP: TAKE SCREEN SHOTS OF YOUR EDITING BY PRINT SCREENING YOUR WORK (Ctrl+PrtScr)**

### Task 5: EVALUATE

On slide 5, underneath your 3 best images, describe how your 'shoot' went and **evaluate** the strengths and weaknesses of your final images. Save and upload your Summer PowerPoint H/W onto **SharePoint**.

## Task 2: ARTIST RESEARCH

Now select your favourite image from your chosen Photographer and complete this SEMI analysis ...



**(SUBJECT)** Describe what you can see in the photograph and explore the image's genre.

- The **Photographer** of this image is called...
- The **title** of this Photograph is ... (give the image's title & date when it was created)
- The **genre** of this photograph is ... (still life/ portraiture/ landscape etc.)
- The **props** I can see in this picture are ... (state the objects you see.)

**(ELEMENTS)** Explain how the elements of photograph are composed.

The **composition** of the photo shows ... (state the objects and say where the objects are placed, foreground, middle ground, background, left, right or central) – Has the 'rule of thirds' been used?

The viewer's eye is **lead** around the photo because of the composition & perspective (photographer's name) has used.

The **perspective** that (name of photographer) has taken the photo from is.. (above, below, at eye level, birds eye view.) This **perspective** is effective because ...(say what effect the perspective has on the photo).

The **Photographer** employs a range of **visual elements** in his/her work. The most striking **elements** are ...(identify the most obvious elements used in the work from **Line, Shape, Form, Texture, Pattern, Colour (+tone) and Space**)...

**GO ON TO EXPLAIN HOW EACH IDENTIFIED ELEMENT IS USED IN THE PHOTOGRAPH.**

**(MEDIA)** What techniques were used to make this Photograph? How was the image taken and what with?

- The photo has been taken from a **short/long distance** so ...(describe how and what has been cropped out if applicable and what remains in the main field of view).
- This is so the ... is the main **focal point** of the image.
- The ...(type of objects) have been placed in the...(foreground/middle ground/ background.) By doing this the viewer's eyes are **lead**...(describe how the different grounds (**fore/mid/back**) create different focal points and leading lines).
- The photo has been taken...(using a studio, outside, on a table etc.) using...(natural sunlight, lamps, artificial light, soft box etc.).
- The **light source** is placed ... (on the left/right/above/below) which is... (describe what the light is doing... is it **highlighting, reflecting or creating shadow**).
- This creates an **atmosphere** because of ... (describe how the light effects the image e.g. shadows, reflections, highlights, grey tones, contrast, ambiguity, clarity, focus, serenity, energy etc.)
- To **emulate** this photograph myself, I would...(explain what type of camera settings, equipment and shooting environment you might need with). Additionally I would also need to research ... (what other areas of research would you need to look into to best emulate this photograph)

**(INTENT)** What was the Photographer trying to 'say' in the image?

- ❖ I feel the photo conveys a message of ... (what message, mood or feeling do you get from the image – calm, sombre, expressive, energetic)
- ❖ It does this by... (describe how the image conveys meaning or mood – is it the **Line, Shape, Form, Texture, Pattern, Colour (+tone) and Space / Composition / Shadows / Perspective** etc.).
  - ❖ How is this work **relevant** to your project and theme? Give your **opinion** of its **strengths and weaknesses**. Suggest further **adaptations**.

Use this SEMI analysis help sheet to guide you through your artist research